

Corps of Engineers Reservoirs Status

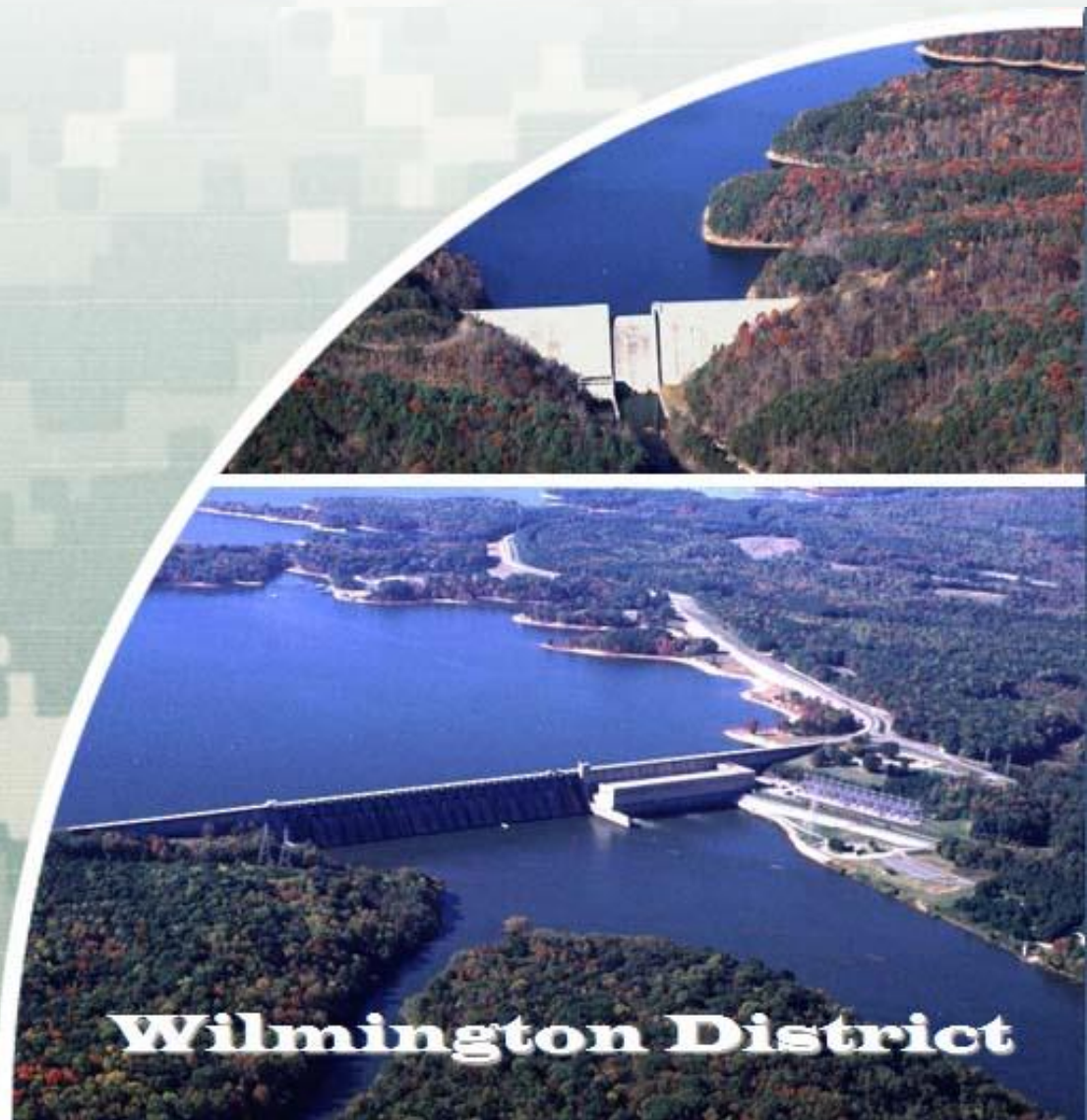
Michael A (Tony) Young, P.E.
Water Management Chief

NC DMAC Annual Meeting
Raleigh, NC

30 April 2015

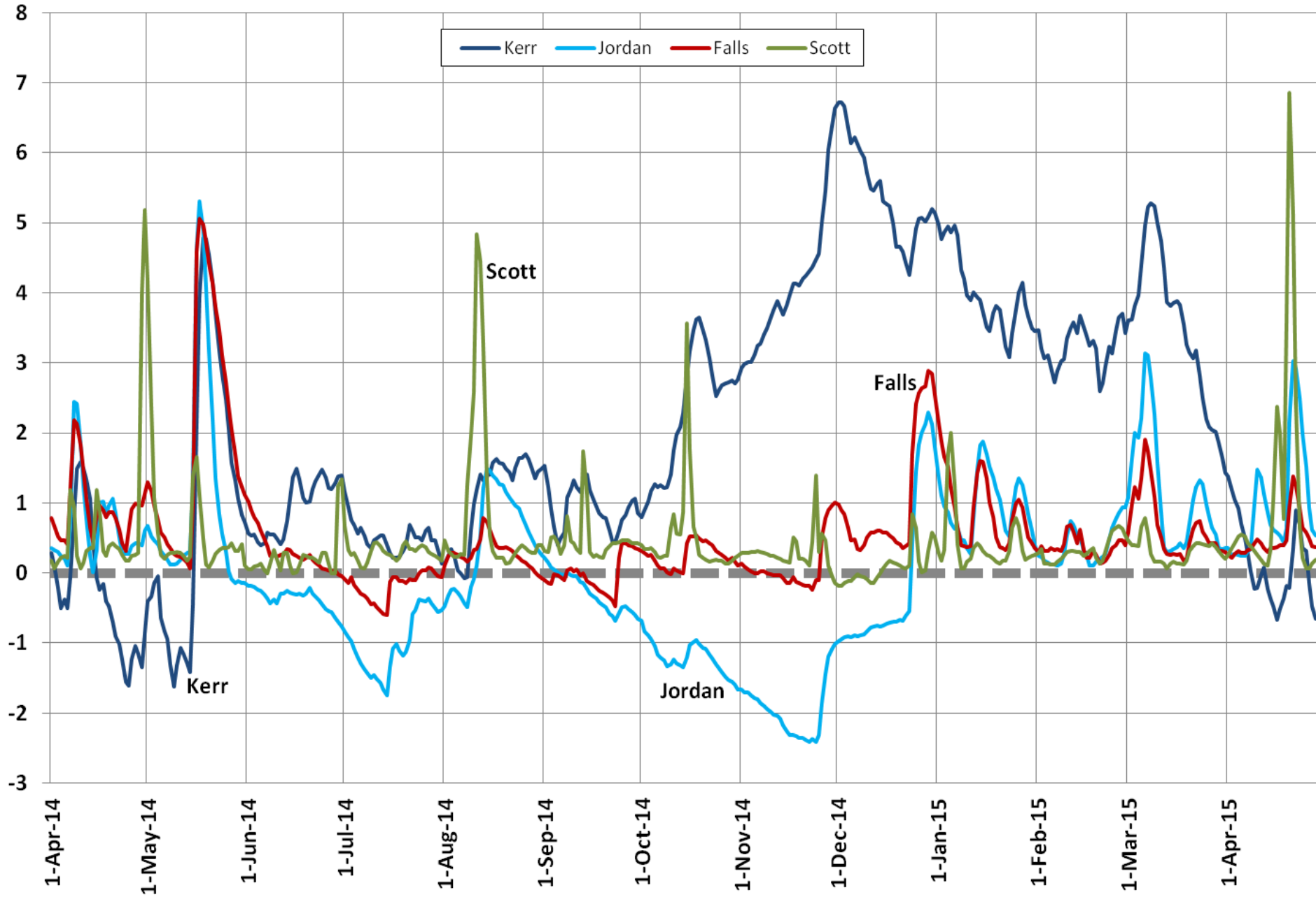


US Army Corps of Engineers
BUILDING STRONG®



Wilmington District

Corps Reservoir Levels Since 1-Apr-2014 (Feet Above or Below Guide Curve)



27 Apr 2015 Weekly Status Report

Reservoir Summaries:

Reservoir	27-Apr-15 0800 Elev (ft-msl)	Guide Curve (ft-msl)	Forecast 04-May-15 Elevation (ft-msl)	Average Net Inflows		Rainfall at Dam	
				7-day cfs (% median)	Apr cfs (% median)	7-day (inches)	Apr (inches)
Falls	251.93	251.5	251.8	1420 (167%)	646 (76%)	1.26	3.89
Jordan	216.76	216.0	216.3	4225 (197%)	2324 (108%)	0.39	5.71
Scott	1030.09	1030.0	1030.2	1715 (245%)	976 (139%)	0.25	4.22
Kerr	301.80	302.0	300.5	16,343 (151%)	9131 (84%)	0.24	3.23
Philpott	977.06	973.5	974.8	993 (257%)	473 (122%)	0.49	3.71

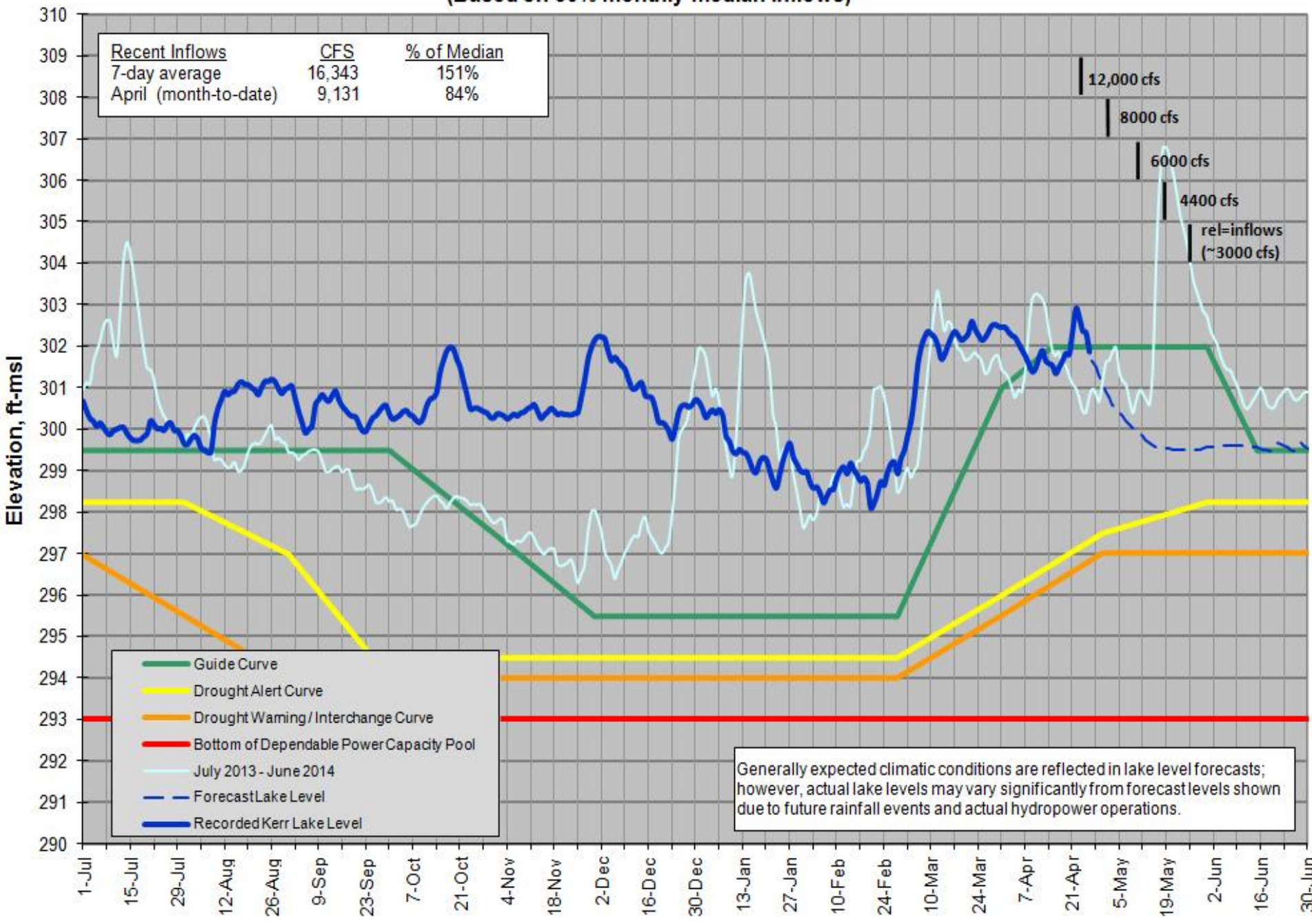
Reservoir	Current Flood Storage Percent Remaining	Current Water Quality Percent Remaining	Forecast 80% WQ Remaining	Forecast 60% WQ Remaining	Current Water Supply or Dependable Power Pool % Remaining	Forecast 80% WS or DPP Remaining	Forecast 60% WS or DPP Remaining
Falls	97	100	*	*	100	*	*
Jordan	98	100	*	*	100	*	*
Scott	100				100	*	*
Kerr	93				100	*	*
Philpott	75				100	*	*

NOTE: Water Quality, Water Supply, and Dependable Power Pool forecasts extend through end of **Jun 2015**
 "*" indicates that storage remaining does not drop below indicated thresholds by end of forecast period.

JH Kerr Lake Level Forecast -- 27 April 2015 (Based on 50% monthly median inflows)

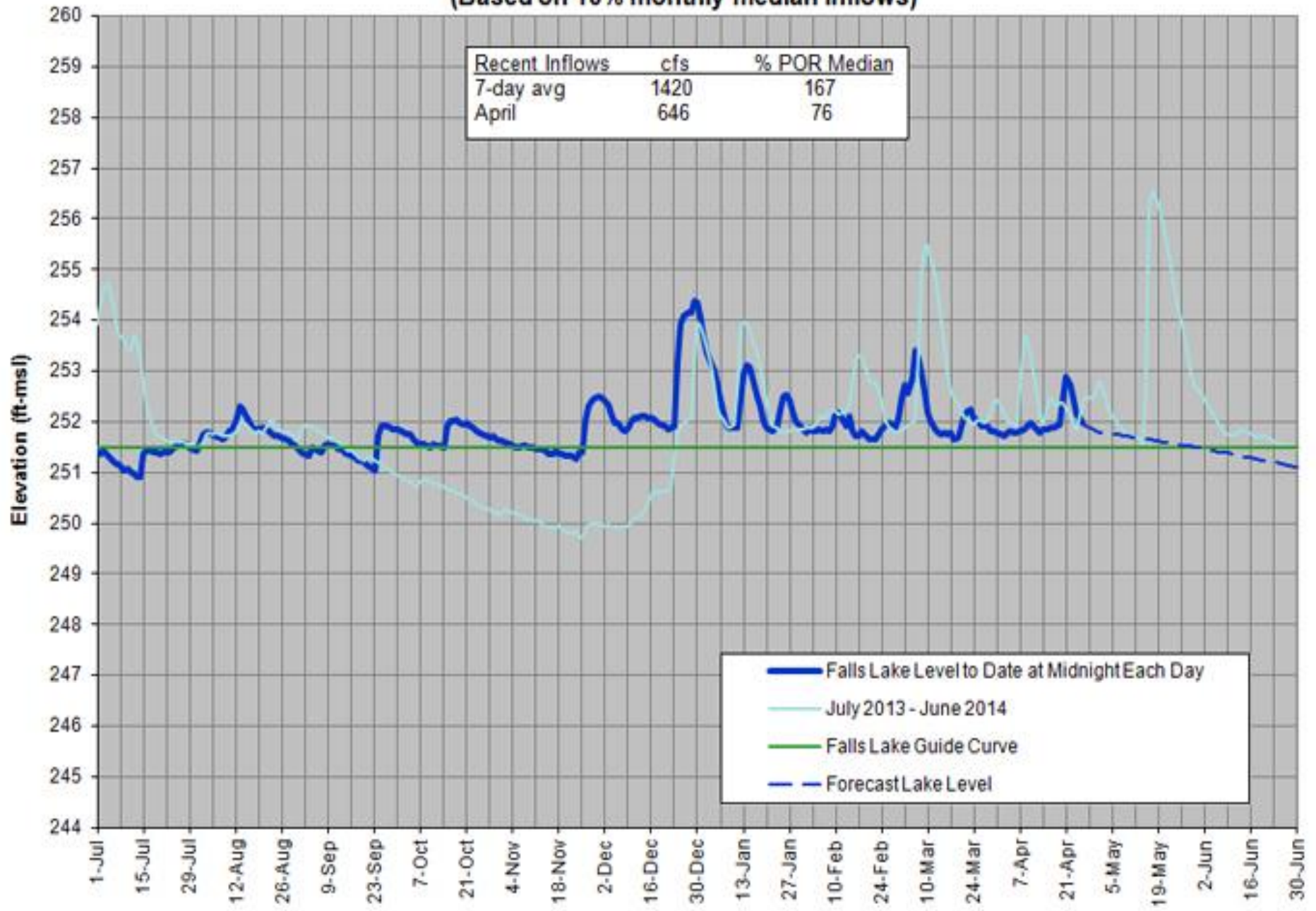
Recent Inflows	CFS	% of Median
7-day average	16,343	151%
April (month-to-date)	9,131	84%

12,000 cfs
 8000 cfs
 6000 cfs
 4400 cfs
 rel=inflows
 (~3000 cfs)

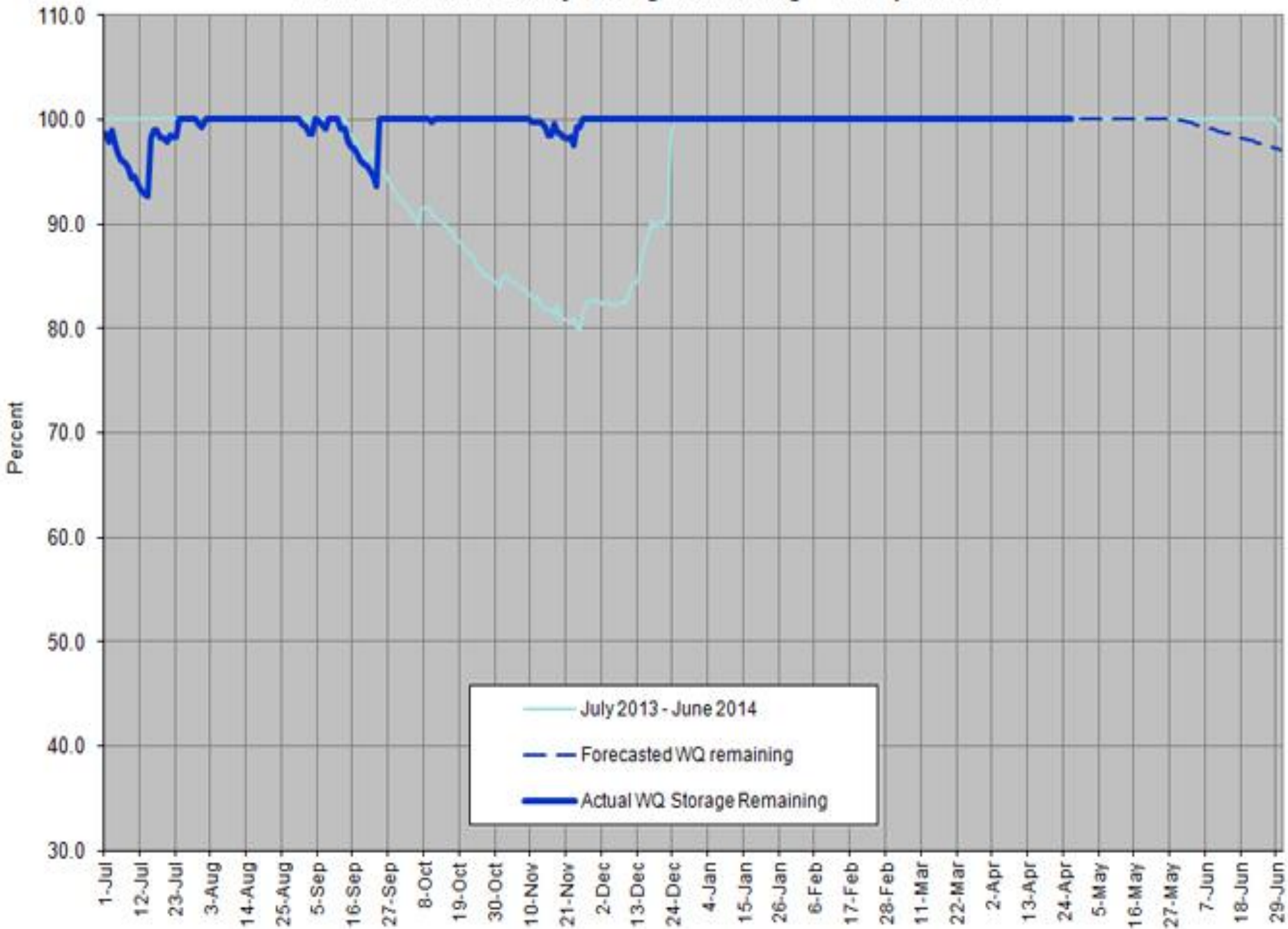


Generally expected climatic conditions are reflected in lake level forecasts; however, actual lake levels may vary significantly from forecast levels shown due to future rainfall events and actual hydropower operations.

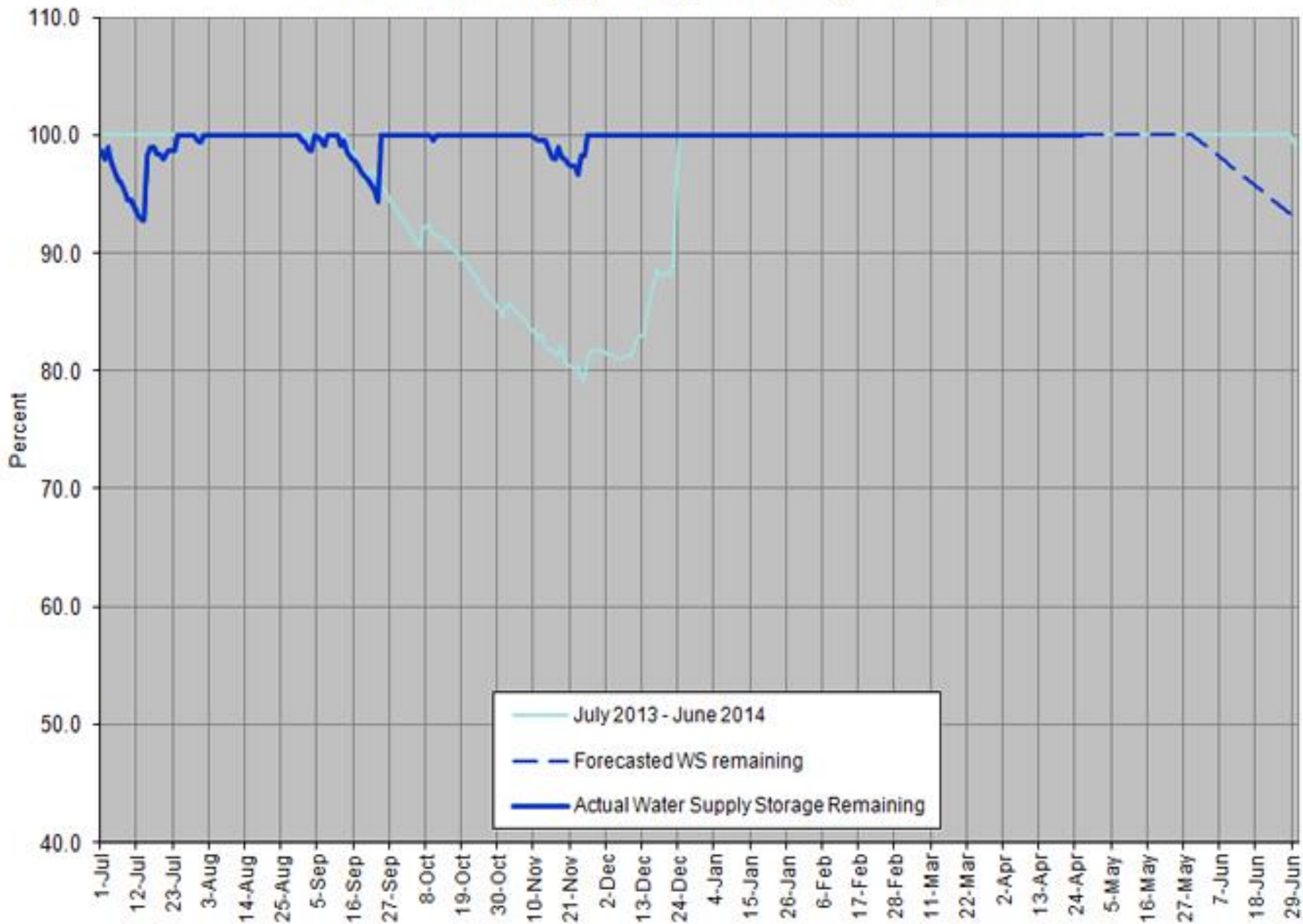
Falls Lake Level - 27 April 2015 (Based on 10% monthly median inflows)



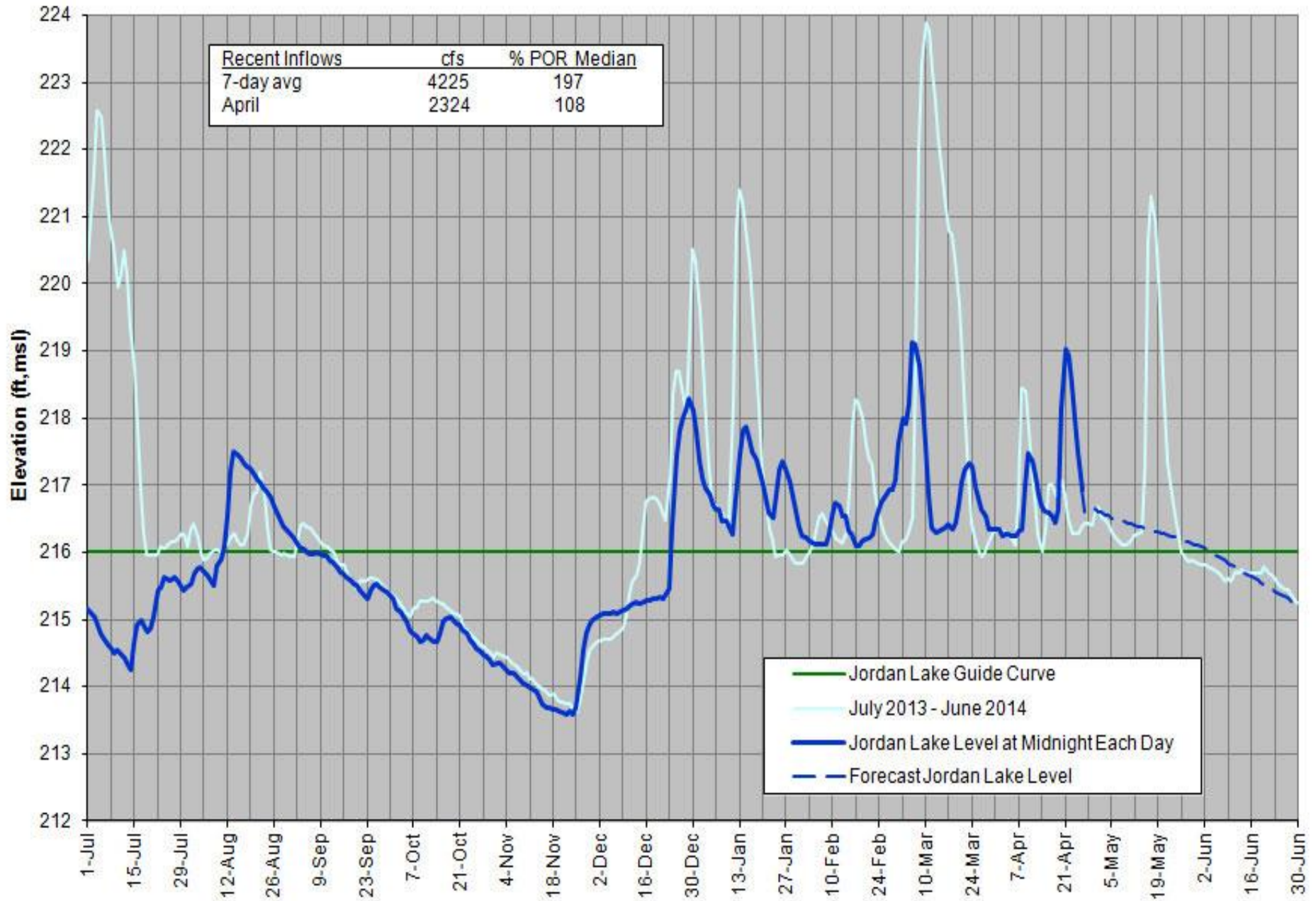
Falls Lake Water Quality Storage Remaining -- 27 April 2015



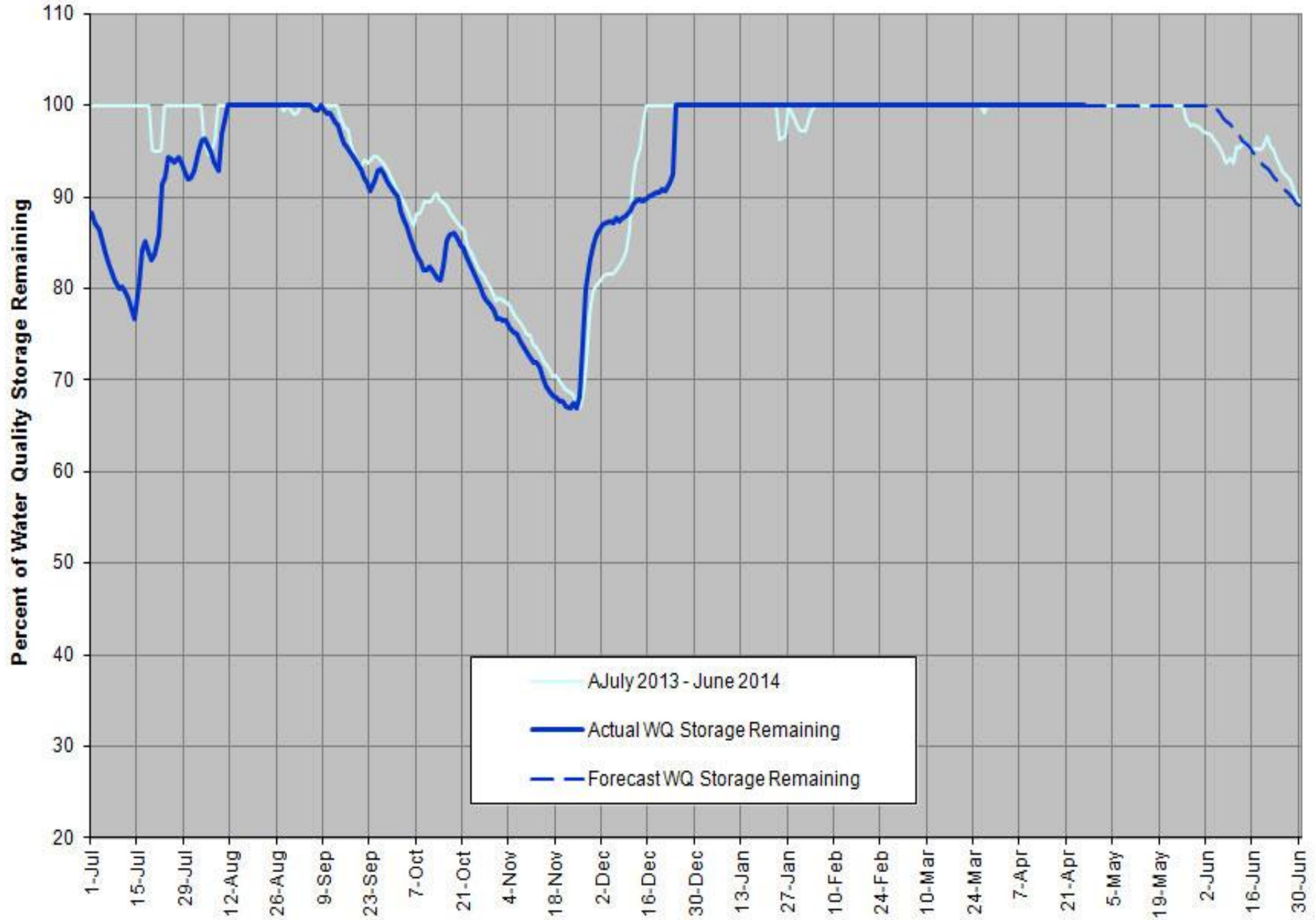
Falls Lake Water Supply Storage Remaining -- 27 April 2015



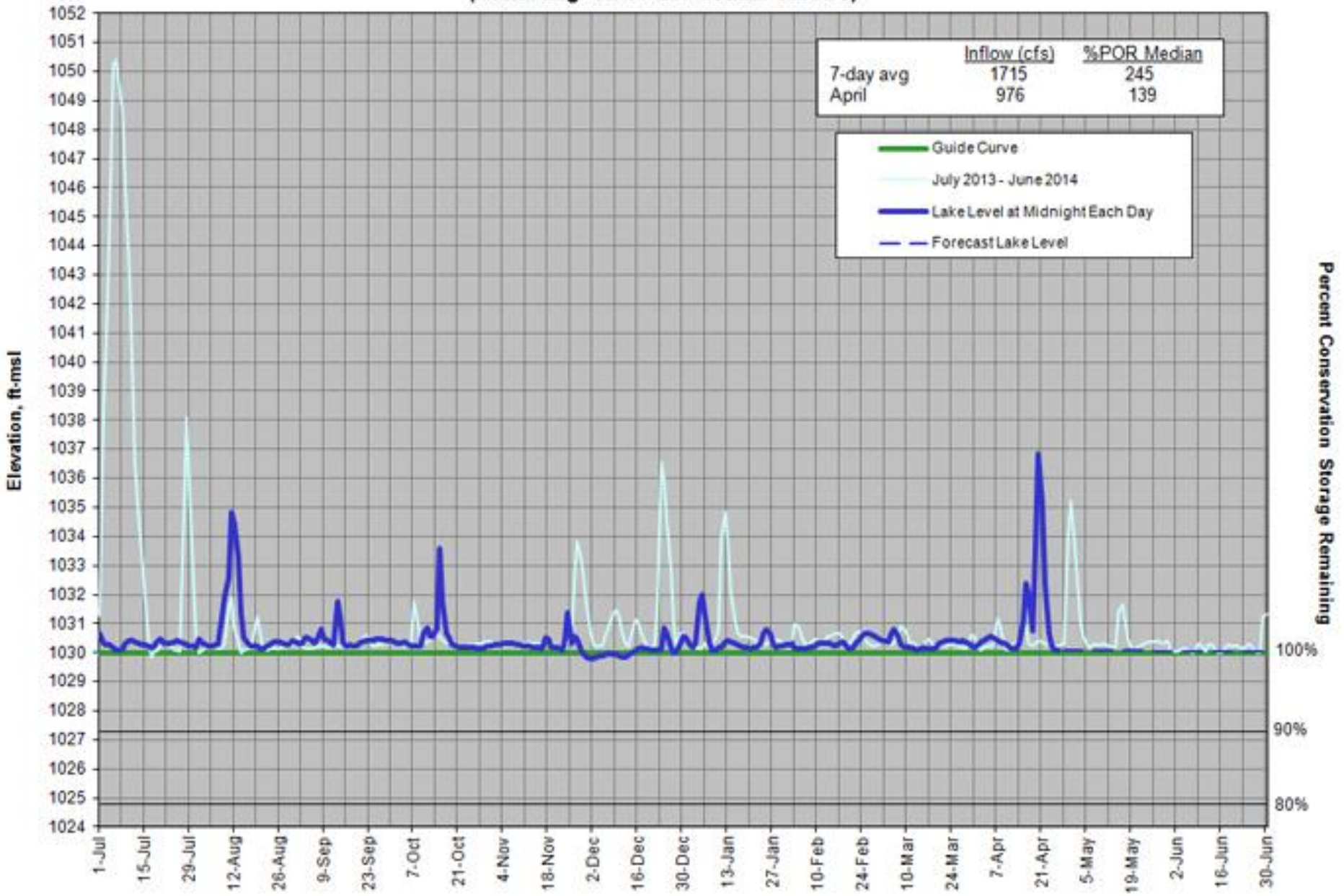
Jordan Lake Level -- 27 April 2015 (Based on 30% monthly median inflows)



Jordan Lake Water Quality Storage Remaining -- 26 April 2015 (Based on 30% monthly median inflows)



**W.Kerr Scott Lake Level – 27 April 2015
(Assuming 45% POR Median Inflows)**



Contact Information:

Michael A (Tony) Young, P.E.
Water Management Chief
Corps of Engineers, Wilmington District
69 Darlington Avenue
Wilmington, NC 28403

michael.a.young@usace.army.mil

(910) 251 - 4455

